

PhD research projects the Pilbara and Central Australia, 2002

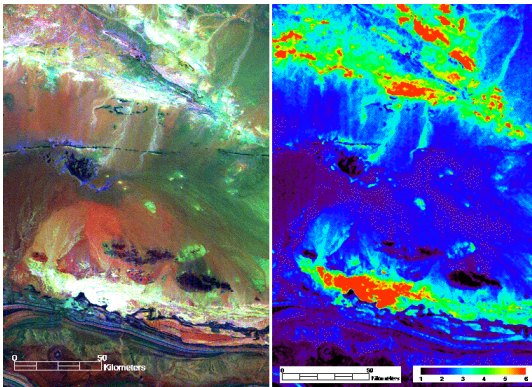
with Mike Sandiford, School of Earth Sciences, University of Melbourne



Radiometrics of the Pilbara craton

The Pilbara in western Australia contains some of Australia's oldest rocks dating back to 3500 Ma. This project will explore the geodynamic evolution of the Pilbara as a prototype for the tectonic evolution of the early crust and the formation of cratons.

Central Australia contains the world's best examples of intraplate orogens. This project will focus on the rates of intraplate deformation.



Radiometrics of the Ormiston Pound region, central Australia

These projects will combine numerical modelling with field-based observations and quantitative thermochronology to explore the way in which the tectonic processes have shaped the long-term character of the continental crust.

The closing date for postgraduate scholarships applications is 31/10/01. Application forms can be obtained from the University of Melbourne Research Office at <http://www.services.unimelb.edu.au/scholarships>

If you want to find out more then contact me by

Knocking on my door
Emailing me
Ringing me at work

Room 449, School of Earth Sciences
m.sandiford@earthsci.unimelb.edu.au
03 8344 7221 **or at home** 03 5983 5605

Mike Sandiford

<http://jaeger.earthsci.unimelb.edu.au/>