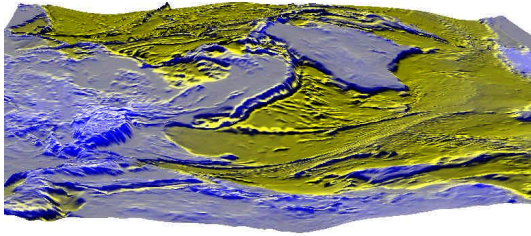


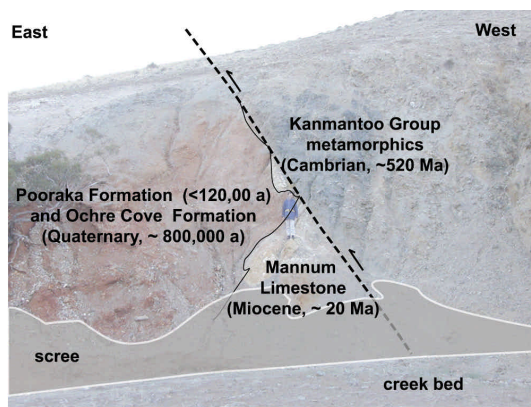
PhD research projects

Neotectonics, 2002

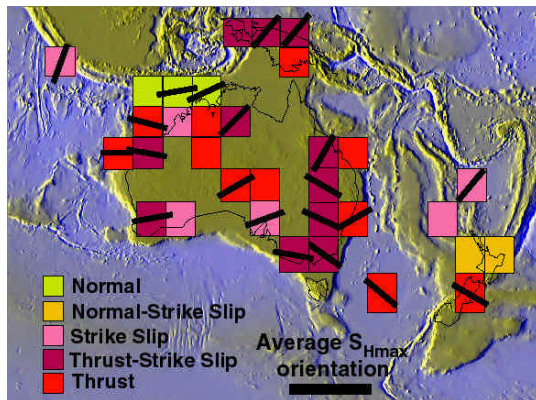
with Mike Sandiford, School of Earth Sciences, University of Melbourne



Dynamic topography associated with geoid variations are reflected in Australia's Neogene tilting record



Quaternary thrust faulting, Cambrai, South Australia



In situ stress field of Australia

Despite its location far from plate boundaries, Australia shows a surprising degree of neotectonic activity, from continental scale warping due to mantle convection, to local faulting in response to *in situ* stress.

One project will focus on the neotectonic record of southeastern Australia, from the Flinders Ranges in the west to the east coast of NSW. This will be aimed at linking the neotectonic record of Quaternary faulting with the *in situ* stress field and the distribution of active seismicity.

Another project will explore the Neogene record of continental warping associated with Australia's transit across an enormous geoid anomaly, associated with deep mantle convection.

The closing date for postgraduate scholarships applications is 31/10/01. Application forms can be obtained from the University of Melbourne Research Office at <http://www.services.unimelb.edu.au/scholarships>

If you want to find out more then contact me by

Knocking on my door
Emailing me
Ringling me at work

Room 449, School of Earth Sciences
m.sandiford@earthsci.unimelb.edu.au
03 8344 7221 **or at home** 03 5983 5605

Mike Sandiford

<http://jaeger.earthsci.unimelb.edu.au/>